

The New Jerusalem: A Heavenly Pyramid?

Many believe the New Jerusalem described in Revelation is a cube, but there's compelling evidence it may actually be shaped like a pyramid. This study examines biblical passages and symbolism suggesting the holy city could be a magnificent heavenly mountain. We'll explore comparisons between Mount Zion and the New Jerusalem, analyze descriptions of its structure, and consider why a pyramid shape aligns with Scripture.



by **janice wright**

Mount Zion and the New Jerusalem

Several Bible verses draw parallels between Mount Zion and the New Jerusalem. Psalm 48:1-2 states: "Great is the Lord and greatly to be praised in the city of our God, in his holy mountain. Beautiful in elevation, the joy of the whole earth, is Mount Zion on the sides of the north, the city of the great King." Hebrews 12:22 echoes this: "But you have come to Mount Zion and to the city of the living God, the heavenly Jerusalem, to an innumerable company of angels." These comparisons suggest the New Jerusalem may be mountain-shaped.

1

Old Testament

Mount Zion described as God's holy mountain and dwelling place

2

New Testament

New Jerusalem likened to Mount Zion and called the heavenly city

3

Eternity

God's eternal dwelling with His people in the New Jerusalem

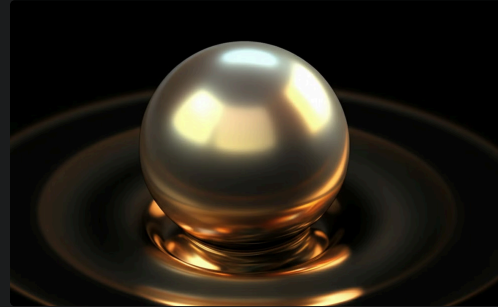


The Gates of the City



Gates

The New Jerusalem boasts twelve magnificent gates, each crafted from a single, luminous pearl. They symbolize God's protection and welcoming presence, always open and accessible to those who have been redeemed by His grace.



Pearls

These gates are not merely decorative; each one is made of a single, perfect pearl, radiating a radiant light that illuminates the city. The pearls represent the purity and preciousness of God's people and the eternal splendor of the New Jerusalem.



Single

The fact that each gate is made from a single pearl signifies the unity and wholeness of the New Jerusalem. There are no divisions or barriers within its walls, only a harmonious community of God's redeemed people.



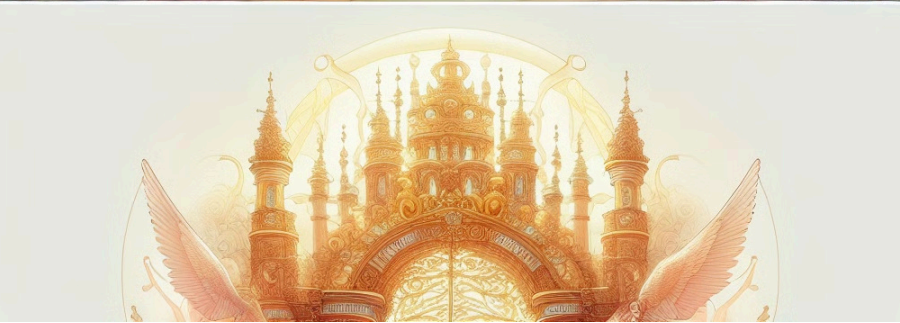
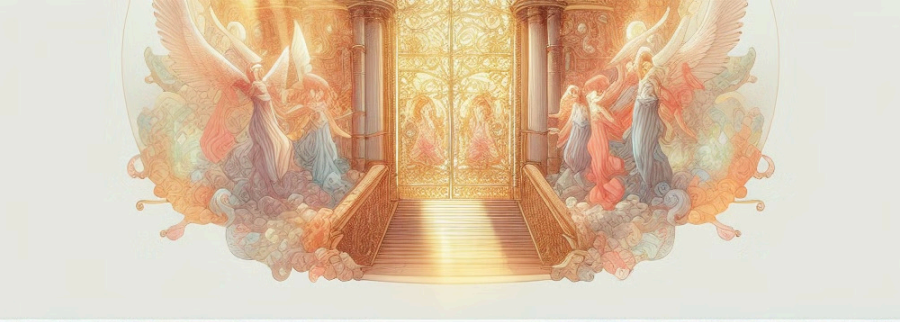
Never

The gates of the city remain perpetually open, reflecting the unending joy and fellowship that characterize the New Jerusalem. There is no need for security or darkness, for God's light shines perpetually, ensuring eternal peace and accessibility.

The Gates of the City

Revelation 21:12-21 describes the New Jerusalem's twelve gates, each guarded by an angel. The gates represent the twelve tribes of Israel, signifying God's eternal covenant with His people. The gates also function as portals into the city, symbolizing access to God's presence and the blessings of the new creation.

Each gate is adorned with a precious stone representing a different tribe: jasper, sapphire, chalcedony, emerald, sardonyx, sardius, chrysolite, beryl, topaz, chrysoprase, jacinth, and amethyst.



The Gates of the City

Descriptions of the New Jerusalem's gates in Revelation closely match Old Testament prophecies about Mount Zion. Revelation 21:12-13 says: "Also she had a great and high wall with twelve gates, and twelve angels at the gates, and names written on them, which are the names of the twelve tribes of the children of Israel: three gates on the east, three gates on the north, three gates on the south, and three gates on the west." This aligns with Ezekiel 48:30-35, which describes a city with the same gate arrangement, named after Israel's tribes.



12 Gates

Three on each side of the city



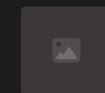
12 Angels

One guarding each gate



Tribal Names

Reuben, Simeon, Levi, Judah,
Issachar, Zebulun, Dan, Naphtali,
Gad, Asher, Benjamin, Joseph



The Gates of the New Jerusalem

Revelation 21:12-13 describes the New Jerusalem with twelve gates, three on each side. Each gate is guarded by an angel, with the name of one of the twelve tribes of Israel inscribed on it. These gates symbolize the entrance to God's presence and the unity of all believers.

The twelve gates represent the twelve tribes of Israel, signifying the inclusion of all God's people in the New Jerusalem. These tribes are a symbol of God's covenant with His people, a covenant that is renewed and perfected in the New Jerusalem.

The twelve angels represent the protection and guidance of God's presence. Angels are messengers of God, and they are always ready to help those who belong to Him. In the New Jerusalem, angels are a constant reminder of God's love and protection.

Precious Materials and Foundations



Precious Materials

The New Jerusalem is made of pure gold, clear as glass. Its foundations are adorned with precious stones.

The gold represents God's glory and majesty. It also signifies the perfect purity and holiness of the New Jerusalem. The clear glass signifies the transparency and truthfulness of God's kingdom.



Foundations of Precious Stones

The foundations are adorned with precious stones representing the twelve tribes of Israel.

Each stone represents a different tribe and symbolizes the eternal covenant that God made with His people. The stones also signify the beauty and diversity of God's kingdom, where all people are united in Him.

Precious Materials and Foundations

Both Old and New Testaments describe the city's construction with precious materials. Isaiah 54:11-12 prophesies: "O you afflicted one, tossed with tempest, and not comforted, behold, I will lay your stones with colorful gems, and lay your foundations with sapphires. I will make your pinnacles of rubies, your gates of crystal, and all your walls of precious stones." Revelation 21:18-21 echoes this: "The construction of its wall was of jasper; and the city was pure gold, like clear glass. The foundations of the wall of the city were adorned with all kinds of precious stones... The twelve gates were twelve pearls... And the street of the city was pure gold, like transparent glass."

Foundations

Adorned with various precious stones

Walls

Made of jasper and other precious materials

Gates

Each gate made from a single pearl

Streets

Paved with pure, transparent gold



WILL THERE BE PEOPLE LIVING OUTSIDE OF THE HOLY CITY

The Bible doesn't explicitly state whether there will be people living outside the New Jerusalem. However, it suggests that the entire earth will be transformed into a paradise.

Revelation 21:1 states, "Then I saw a new heaven and a new earth, for the first heaven and the first earth had passed away." This indicates that the entire universe, including Earth, will be renewed.

Since the New Jerusalem is described as a heavenly city, it is possible that it will be the dwelling place for the redeemed, while the rest of the earth will be a place of peace and beauty for all creation.



No More Tears or Sorrow

Multiple scriptures promise an end to suffering in the New Jerusalem. Isaiah 25:8 declares: "He will swallow up death forever, and the Lord God will wipe away tears from all faces." This is mirrored in Revelation 21:4: "And God will wipe away every tear from their eyes; there shall be no more death, nor sorrow, nor crying. There shall be no more pain, for the former things have passed away." Isaiah 65:19 adds: "I will rejoice in Jerusalem, and joy in My people; the voice of weeping shall no longer be heard in her, nor the voice of crying."

1

No More Death

Death will be swallowed up forever in the New Jerusalem

2

No More Tears

God Himself will wipe away all tears from His people's eyes

3

No More Sorrow

Crying and pain will be things of the past in the heavenly city

No Need for Sun or Moon

The New Jerusalem will not require natural light sources. Isaiah 60:19-20 prophesies: "The sun shall no longer be your light by day, nor for brightness shall the moon give light to you; but the Lord will be to you an everlasting light, and your God your glory. Your sun shall no longer go down, nor shall your moon withdraw itself; for the Lord will be your everlasting light." Revelation 21:23 confirms: "The city had no need of the sun or of the moon to shine in it, for the glory of God illuminated it. The Lamb is its light."

Old Testament

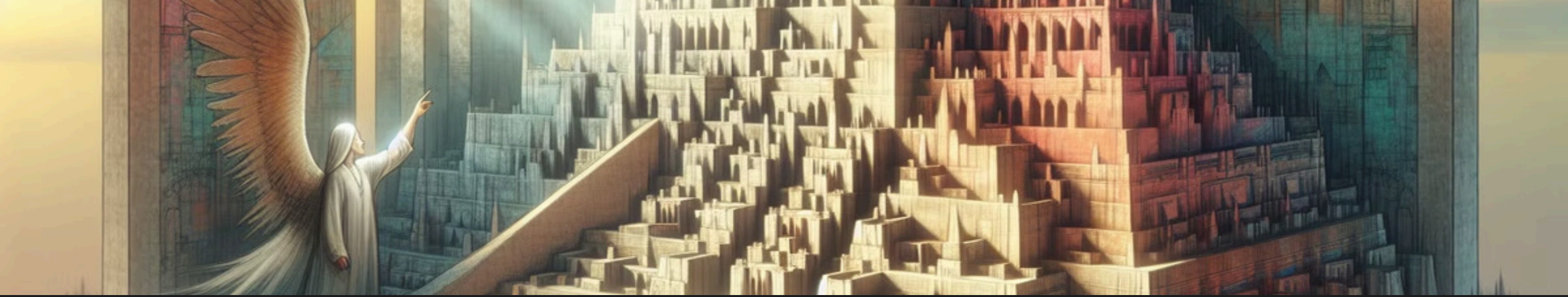
Isaiah prophesies God as the everlasting light

New Testament

Revelation describes God's glory illuminating the city

Eternal Day

No night or darkness in the presence of God's light



The Wall's Measurements

Wall Height

144 cubits (216 feet)

City Dimensions

12,000 furlongs each side

Revelation 21:17 describes the city's wall: "Then he measured its wall: one hundred and forty-four cubits, according to the measure of a man, that is, of an angel." This 144-cubit (about 216 feet) wall seems small compared to a massive cube city. However, it makes more sense for a pyramid shape, where a protective wall would be needed around the base. The city's overall dimensions are given in Revelation 21:16: "The city is laid out as a square; its length is as great as its breadth. And he measured the city with the reed: twelve thousand furlongs. Its length, breadth, and height are equal."

Satan's Imitation of God's Throne

The prevalence of pyramids in ancient cultures may be Satan's attempt to mimic God's heavenly throne. Isaiah 14:13-14 reveals Satan's ambition: "For you have said in your heart: 'I will ascend into heaven, I will exalt my throne above the stars of God; I will also sit on the mount of the congregation on the farthest sides of the north; I will ascend above the heights of the clouds, I will be like the Most High.'" This suggests Satan knows God's throne is on a mountain and tries to replicate it through earthly pyramids used for false worship.

1

God's True Throne

Heavenly Mount Zion, seat of divine authority

2

Satan's Imitation

Earthly pyramids used for false worship

3

Final Victory

God's throne established forever in New Jerusalem



Reinterpreting the City's Size

The 12,000 furlongs measurement in Revelation 21:16 is often interpreted as 1,500 miles per side. However, ancient measurements typically referred to a city's circumference. Dividing 12,000 furlongs by 4 (sides) or 8 (including diagonal edges) yields more reasonable dimensions. For example, $12,000 \text{ furlongs} \div 8 \approx 1,500 \text{ furlongs per edge} \approx 187.5 \text{ miles}$. This results in a pyramid about 133 miles high at its peak - still enormous, but more conceivable than extending into outer space.



Traditional Cube Interpretation

1,500 miles per side, extending far into space



Pyramid Reinterpretation

~188 miles per base edge, ~133 miles high



Conclusion: A Heavenly Mountain City

While the exact shape of the New Jerusalem remains a mystery until its revelation, the pyramid interpretation aligns with many biblical descriptions. It connects Mount Zion symbolism, makes sense of the wall measurements, and reflects God's throne atop a holy mountain. Whether cube or pyramid, the New Jerusalem will be an awe-inspiring dwelling place where God lives among His people for eternity. As Revelation 21:3 proclaims: "Behold, the tabernacle of God is with men, and He will dwell with them, and they shall be His people. God Himself will be with them and be their God."

1

Biblical Alignment

Pyramid shape fits many scriptural descriptions

2

God's Dwelling

The New Jerusalem as God's eternal home with His people

3

Anticipation

Awaiting the full revelation of this glorious city

A City of Unity and Eternal Joy



Unity of Believers

The New Jerusalem, the bride of Christ, is a city where believers from both the Old and New Testaments will dwell together.



Perfect Harmony

It represents a place of perfect unity and harmony, a place where all believers will finally be together with their Savior.



Eternal Redemption

This city symbolizes God's eternal plan of redemption, where all who have been saved will live in perfect peace and joy.

It's a place where all tears will be wiped away and where all who have ever believed in Jesus will be eternally reunited.

A City of Unity and Eternal Joy



Unity of Believers

The New Jerusalem, the bride of Christ, is a city where believers from both the Old and New Testaments will dwell together.



Perfect Harmony

It represents a place of perfect unity and harmony, a place where all believers will finally be together with their Savior.



Eternal Redemption

This city symbolizes God's eternal plan of redemption, where all who have been saved will live in perfect peace and joy.